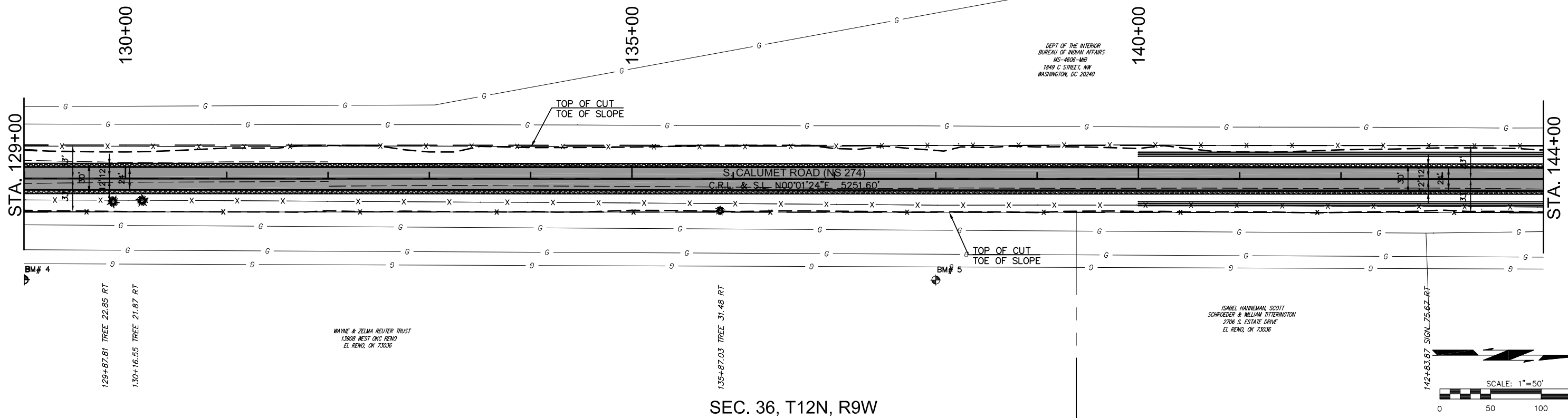
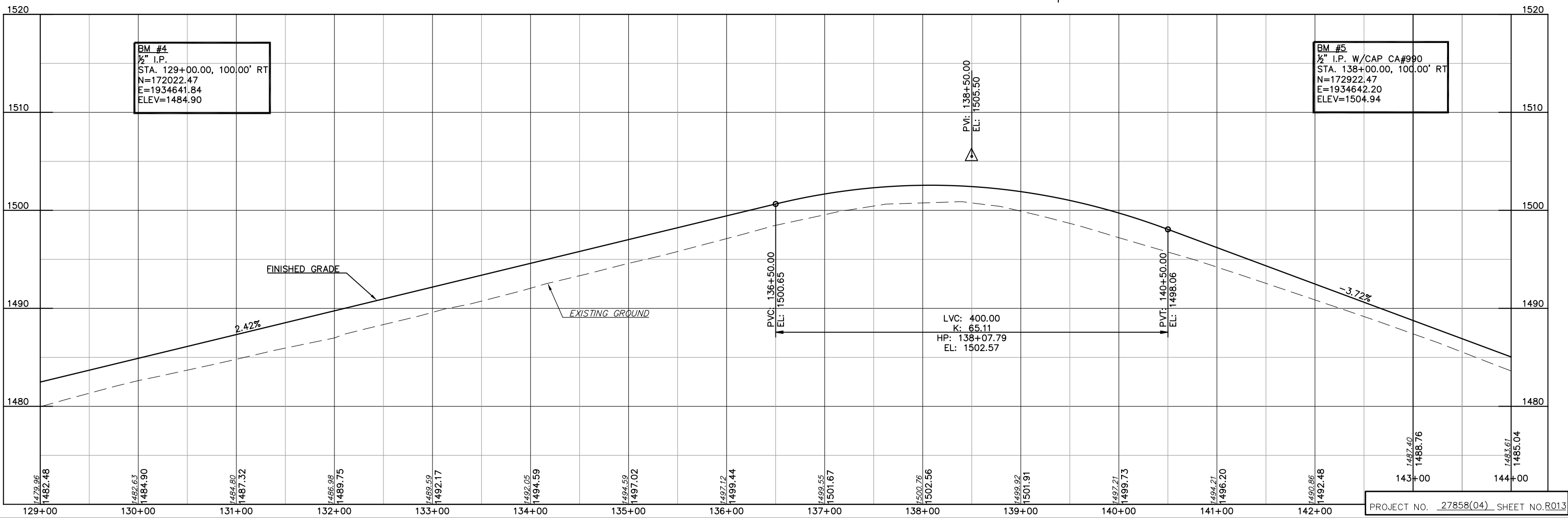


SEC. 35, T12N, R9W



SEC. 36, T12N, R9W



BM #4
 1/2" I.P.
 STA. 129+00.00, 100.00' RT
 N=172022.47
 E=1934641.84
 ELEV=1484.90

BM #5
 1/2" I.P. W/CAP CA#990
 STA. 138+00.00, 100.00' RT
 N=172922.47
 E=1934642.20
 ELEV=1504.94

PLOTED: Tuesday, September 05, 2017 @ 03:24PM
 N:\1454-Columet Rd-Coronado County\Drawings\1454.dwg